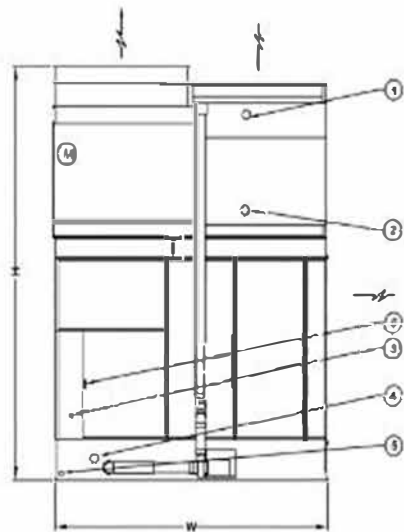
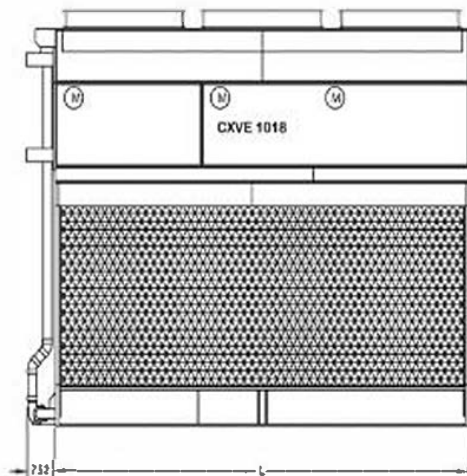
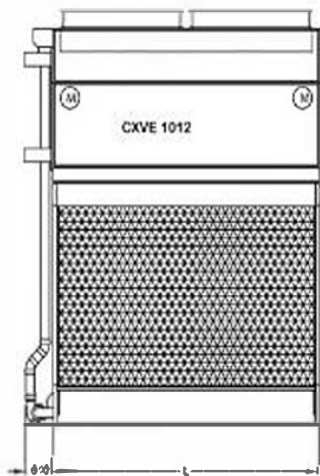


Model	Weights (kg)			Dimensions (mm)			Air Flow (m³/s)	Fan Motor (kW)	Water Flow (l/s)	Pump Motor (kW)	R717 charge (kg)
	Oper. Weight (kg)	Ship. Weight(kg)	Heaviest Section (kg)	L	W	H					
CXVE 244-1012-15L	8030	5130	2950	3651	2997	5199	33.2	(2x) 5.5	54.6	(1x) 5.5	72.0
CXVE 256-1012-20L	8060	5160	2980	3651	2997	5199	36.2	(2x) 7.5	54.6	(1x) 5.5	72.0
CXVE 273-1012-15L	8820	5880	3700	3651	2997	5199	32.5	(2x) 5.5	54.6	(1x) 5.5	119.0
CXVE 274-1012-30L	8110	5210	3030	3651	2997	5199	39.9	(2x) 11.0	54.6	(1x) 5.5	72.0

CXVE 1012-1018



Reliably serving your cooling process ...



Highest capacity
per footprint
on the market!

- ✓ Energy efficient
- ✓ Low maintenance
- ✓ Easy inspection
- ✓ Ultra silent
- ✓ Unmatched hygiene control



CXVE

Evaporative
Condensers



**BALTIMORE
AIRCOIL COMPANY**

... because temperature matters™

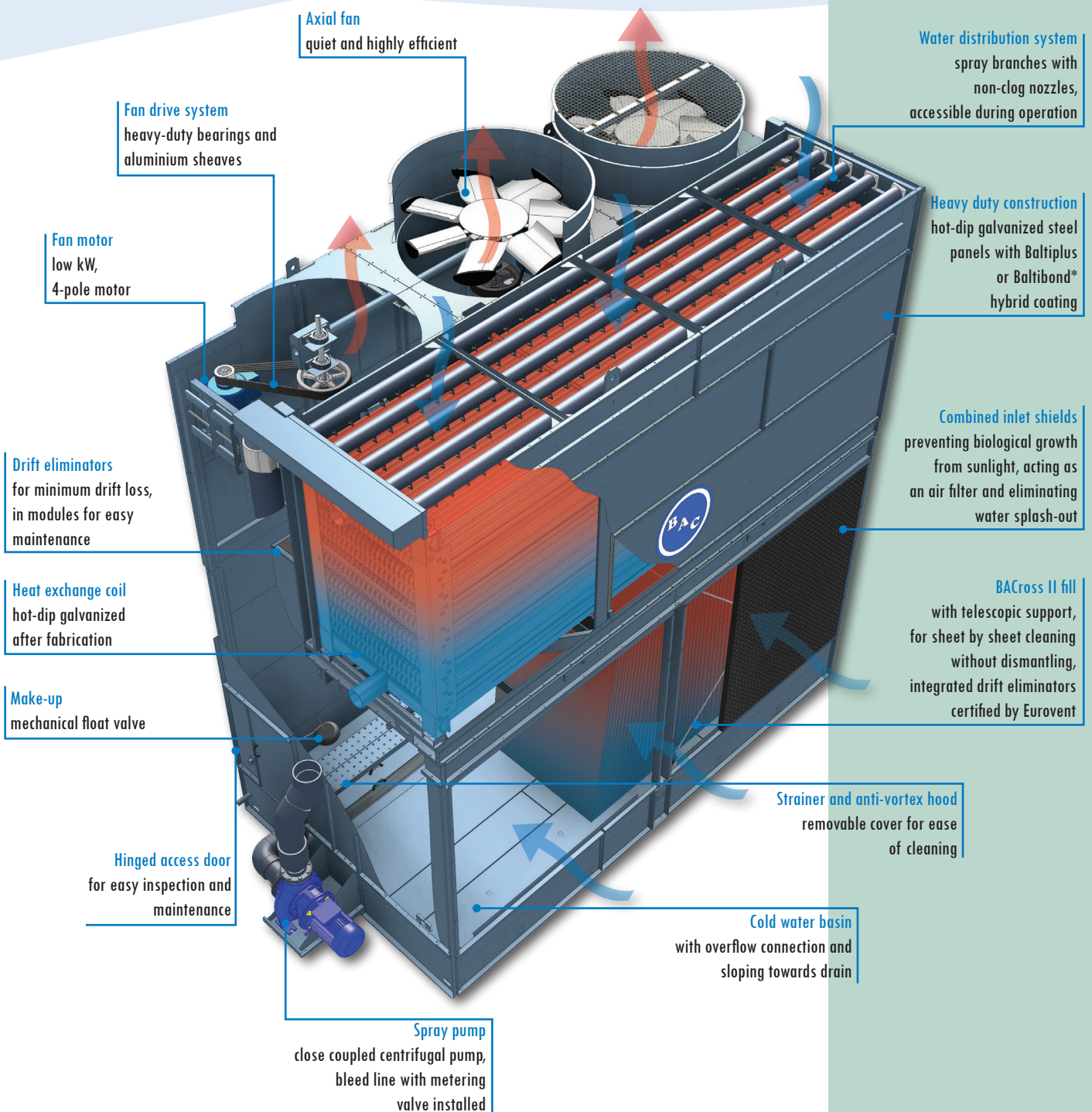
New Series 1500

Evaporative condenser CXVE

Baltimore Aircoil is a worldwide leading manufacturer of heat rejection equipment for a wide range of applications. In its constant search for improvement in design and performance BAC has developed and perfected many features which have become the standard of excellence for cooling throughout the world.

CXVE combined flow evaporative condensers use energy efficient axial fans with low sound emission and guarantee superb thermal performance. CXVE evaporative condensers can be arranged in multi cells for large capacity requirements.

Single cell capacity : 440 - 2765 kW



green tower

Energy efficient

Evaporative cooling equipment can minimize the energy consumption of the compressor to be cooled. In addition CXVE evaporative condensers use a unique combined heat transfer system (coil on fill) providing maximum capacity at the lowest refrigerant charge available in the industry.

CXVE have energy efficient axial fans.

Ultra silent design

CXVE evaporative condensers use fans with low sound emissions as standard. For extremely sound sensitive applications, where typically centrifugal fans are used, Whisper Quiet fans* with or without sound attenuators* are available.



LOW ENVIRONMENTAL
IMPACT PRODUCT



Whisper Quiet fans*



Easily accessible fan drive system with extended lubrication lines*



Large access door and internal walkway*

low maintenance and easy inspection

- Full access to spray distribution and top of coil during operation.
- Inspection and maintenance can be done with comfort, while standing inside.
- The BACross II fill is telescopically supported for easy inspection.
- Large inward swinging access door.
- Spacious plenum and internal walkway*.
- Internal and external platforms and ladders*.
- Combined inlet shields are easily removable without tools.
- Extended lubrication lines* with easily accessible grease fittings.

unmatched hygiene control

- The BACross II fill is telescopically supported for easy cleaning of the core, sheet by sheet without dismantling. Fill includes drift eliminators certified by Eurovent.
- The cold water basin is sloped towards the drain.
- The suction strainer anti-vortex hood is removable.
- The combined inlet shields protect basin water (and spray water*) from direct sunlight and the intrusion of foreign matter.
- Sump sweeper piping* minimizing sediments in the cold water basin is available for use with side stream filtration.
- The clean-out port* helps remove silt and sludge from the basin.

year-round reliable operation

CXVE uses **high quality components**, meeting very strict technical specifications for operation in the most demanding conditions. Upgrade your condenser operational flexibility with :

- **Vibration cut out switches*** to protect the equipment against mechanical failure.
- **Electrical basin heaters*** to protect the water in the basin against freezing, when the condenser is idle.
- **Electric water level control*** for precise control of the water level with no need for seasonal adjustment.

long service life

CXVE evaporative condensers offer a broad choice of **construction materials**, ranging from galvanized steel (Baltiplus) to the proven Baltibond* hybrid coating and stainless steel* (AISI 304L or 316L).

The coil is constructed of continuous length of prime surface steel, hot-dip galvanized after fabrication. Tubes are sloped for free drainage of fluid. Designed for maximum 23 bar operating pressure according to PED. Optionally available are multiple circuit coils. High pressure coils are stainless steel coils in type 304L or 316L.

low installed cost

Easy on-site assembly of factory-built sections to reduce shipping and installation costs.

Full access to spray distribution and top of coil during operation



Easily removable combined inlet shields



Patented BACross II fill for easy inspection and cleaning

BALTIMORE AIRCOIL COMPANY

more than 75 years of experience and know-how

With thousands of successfully operating installations worldwide Baltimore Aircoil has the **application and system experience** to assist you in the design, installation and operation of your cooling equipment. Ongoing investment in research, combined with an advanced **R&D** laboratory facility, enables BAC to consistently offer new technologies and products to meet developing industry demands.

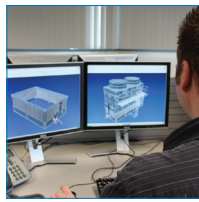
Baltimore Aircoil has a **network of highly qualified sales representatives** backed up by an experienced technical staff to ensure that each customer project is a success.

Sustainability is fostered and cultivated in BAC's business processes. Through our products we also help our customers to achieve their sustainability goals. You can find BAC's sustainability commitments on the website www.BacSustainability.com

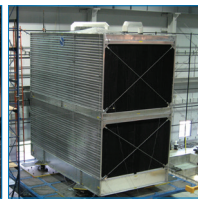
ISO 9001:2008 certified



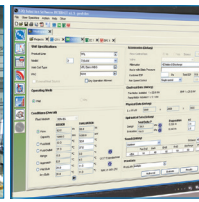
PED 97/23/EC
23 Bar standard design pressure
34 Bar test pressure



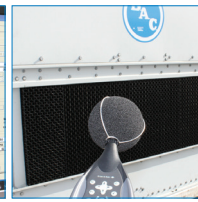
3D-design software



5000 m² R&D-test centre



selection and simulation software



testing



high quality and sustainable manufacturing



on site services



sustainable business processes and culture

BAC offers a broad choice of condensers to provide an optimal solution for each and every application requirement. The broad range of products is further enhanced by many options and accessories. Some of the more commonly used options and accessories are listed below.

options and accessories

- Material options for best cost and life expectancy match**
 - Baltiplus (galvanised steel)
 - Baltibond hybrid coating
 - Stainless Steel (AISI 304L or 316L)
- Sound reduction options for even the most stringent requirements**
Sound attenuation and/or Whisper Quiet fans in lieu of standard low sound axial fans.
- Enhanced access for inspection and maintenance**
External and internal (where applicable) ladders and service platforms.
- Maintenance made even easier**
 - Sump sweeper piping for use with side stream filtration systems.
 - Vibration cut-out-switch to prevent mechanical damage.
 - Electrical basin heaters to protect the water in the basin against freezing, when the condenser is idle.
 - Electric water level control for precise control of the water level with no need for seasonal adjustment.

For more information visit our website at www.BaltimoreAircoil.eu.

Contact your BAC representative to assist you with the selection, operation and maintenance of your condenser installation, to ensure continuous efficiency of your process.



www.BaltimoreAircoil.eu

www.BacSustainability.com

info@BaltimoreAircoil.eu



BALTIMORE AIRCOIL COMPANY

Your local contact :

... because temperature matters™